

# MONTHLY UPDATE

2:00 pm CCT

June 25, 2019



**SOUTHERN STAR**  
CENTRAL GAS PIPELINE



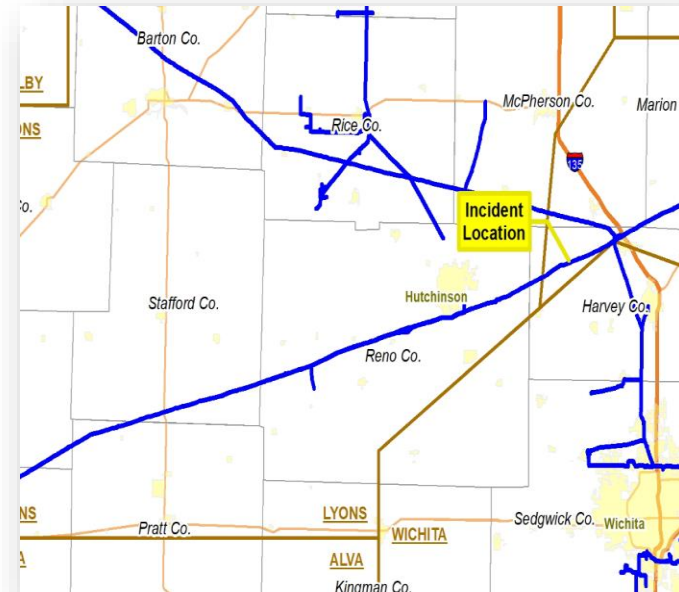
# AGENDA

- Introductions and Welcome
- Safety Moment
- Line R (KH) & Line N (SB) Status
- PSO / Storage
- Business Development
- Capacity Planning
- CSI Updates
- Marketing & Customer Service Q&A

**LINE R & LINE N**

# LINE R (LS 130, KH) STATUS

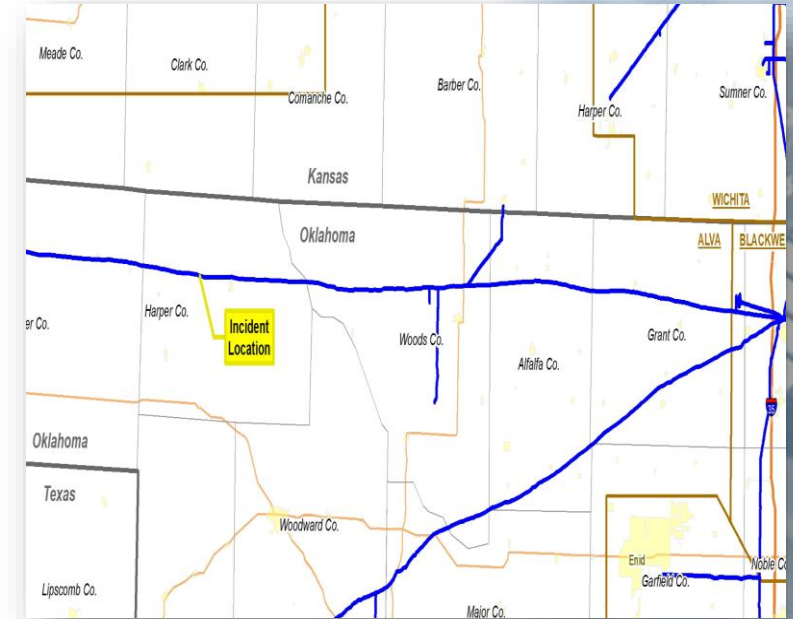
- Rupture and subsequent fire 06/15/18 *(no injuries, fatalities, or damage to structures)*
- Line returned to service 06/19/18 *(20% pressure reduction – Ark River to Hesston)*
- Root Cause Failure Report received 10/23/18
  - Near Neutral pH Stress Corrosion Cracking
- In-Line Inspection (EMAT – crack detection)
  - Completed 12/17/18 (Sylvia to Hesston – 58 miles)
  - Preliminary Report received 02/11/19
    - Six crack-like anomalies identified affecting 3 joints of pipe.
    - 3 joints of pipe replaced and repairs completed 02/24/19
  - Final Report received 04/16/19
    - 26 crack anomalies identified
    - All anomalies excavated and repairs completed 06/10/19
  - PHMSA Meeting 06/19/19
  - Return to Service Pressure Increase 06/20/19



*Detailed investigation and analysis to ensure ongoing safety*

# LINE N (LS 315, SB) STATUS

- Rupture 08/06/18 *(no injuries, fatalities, ignition of gas, or damage to structures)*
- Line returned to service 08/09/18 *(under pressure reduction)*
- Metallurgical Report received 02/26/19
  - High pH Stress Corrosion Cracking
- In-line Inspection (EMAT – crack detection)
  - Completed 12/21/18 *(Alva to Medicine Lodge River – 17 miles)*
    - Preliminary Report received 2/25/19 *(No cracks identified meeting preliminary threshold)*
    - Final Report received 03/26/19 *(No cracks identified meeting preliminary threshold)*
  - Completed 12/31/18 *(Medicine Lodge River to Blackwell – 56 Miles)*
    - Preliminary Report received 02/18/19 *(No cracks identified meeting preliminary threshold)*
    - Final Report pending
  - ILI plan in development for failure section (Beginning of Line to West Side of Cimarron River – 92 miles)



*Detailed investigation and analysis to ensure ongoing safety*

# **PSO / STORAGE**

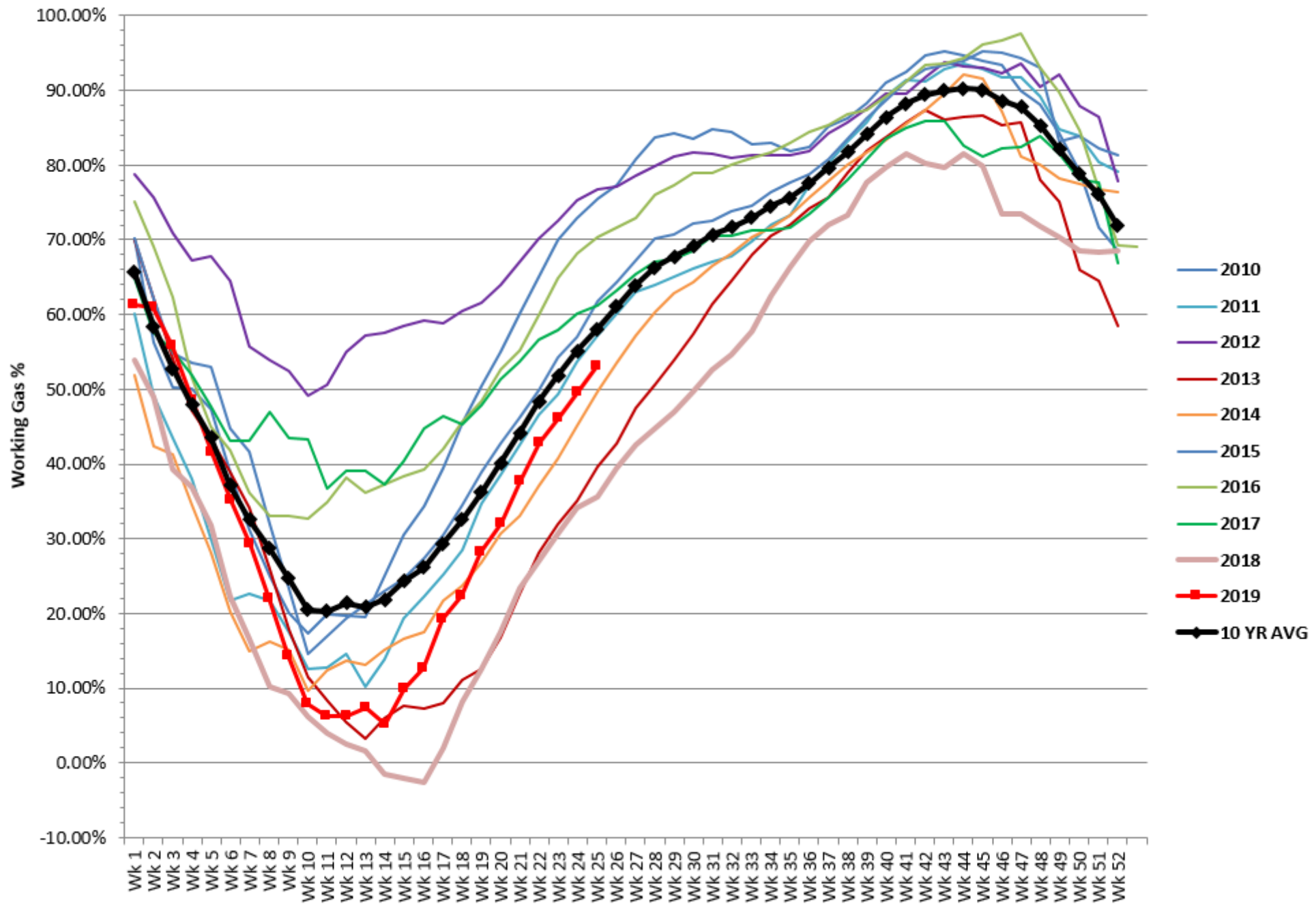
## **(PLANNED SERVICE OUTAGE)**

Southern Star 2019 Planned Service Outage						Historical Average ID3 Scheduled Volume		
Work Activity						Operational Capacity Information		
Status	Projected Start Date	Projected Return to Normal Date	Location(s)	Type of Work	Map	Capacity After Reduction	% Reduction from Normal Operational Capacity	Constraint Area(s)
	May 14, 2019	June 29, 2019	Riner C/S	Riner Unit Maintenance	<a href="#">Map</a>	159,695 Dth/d Riner Station (Location 445569)	18% Reduction - (Location 445569)	Rawlins Hesston
REVISED	June 3, 2019	June 28, 2019	Peculiar C/S	Peculiar Unit Maintenance	<a href="#">Map</a>	200,000 Dth/d Sedalia @ Ottawa (Location 442350)	13% Reduction - (Location 442350)	Sedalia, Carrollton
	June 19, 2019	June 21, 2019	Yuma C/S	Unit Maintenance	<a href="#">Map</a>	165,000 Dth/d Levant Station (Location 445577)	15% Reduction - (Location 445577)	Rawlins Hesston
	June 24, 2019	June 29, 2019	Hoxie C/S	Hoxie Unit Painting	<a href="#">Map</a>	165,000 Dth/d Levant Station (Location 445577)	15% Reduction - (Location 445577)	Rawlins Hesston
	June 26, 2019	June 28, 2019	Otis C/S to Hesston C/S	Smart Pig Run	<a href="#">Map</a>	55,000 Dth/d Levant Station (Location 445577) 0 Dth/d ANR Alden (Location 35515) 0 Dth/d KGST Alden (Location 208) 0 Dth/d NGPL Barton (Location 121415)	71% Reduction - (Location 445577) 100% Reduction - (Location 35515) 100% Reduction - (Location 208) 100% Reduction - (Location 121415)	Rawlins Hesston
	July 16, 2019	July 18, 2019	Ratliff C/S	Ratliff Unit Maintenance	<a href="#">Map</a>	40,000 Dth/d NGPL Carter County (Location 17069)	53% Reduction - NGPL Carter County (Location 17069)	South of Edmond
	July 17, 2019	July 19, 2019	Logan Co, OK	Pipeline Maintenance	<a href="#">Map</a>	0 Dth/d West Edmond (Location 444001) 0 Dth/d Superior Cashion (Location 16857) 0 Dth/d DCP Kingfisher (Location 12723)	100% Reduction - (Location 444001) 100% Reduction - (Location 16857) 100% Reduction - (Location 12723)	West Edmond
	July 22, 2019	July 31, 2019	Welda C/S	Welda Station Modifications	<a href="#">Map</a>	275,000 Dth/d Hesston CS (Location 445536) 430,000 Dth/d Blackwell CS (Location 445511) 20,000 Dth/d TIGT Glavin (Location 16593) 10,000 Dth/d TIGT Sugar Creek (Location 16592) <b>Interruptible Services Will be Impacted</b>	57% Reduction - (Location 445536) 34% Reduction - (Location 445511)	Kansas Hugoton, Rawlins Hesston, Straight Blackwell, Canadian Blackwell, Blackwell Edmond, South Edmond, Oklahoma Other

# STORAGE UPDATE

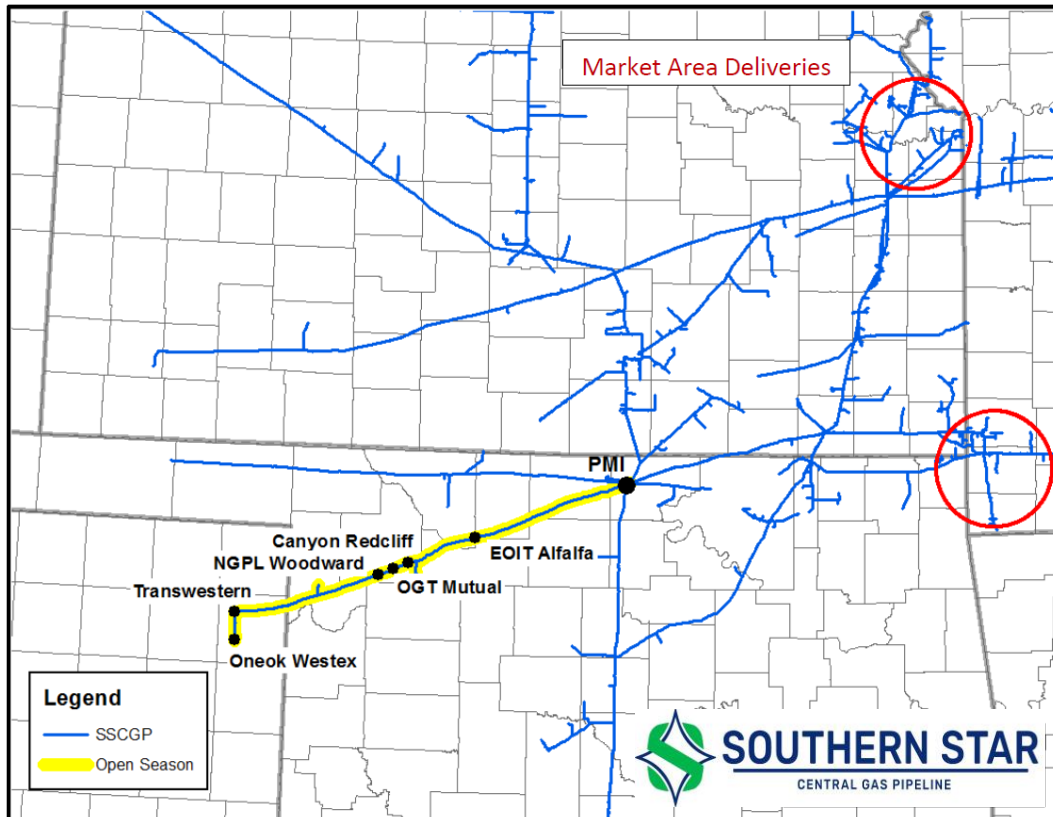


## Southern Star Working Gas

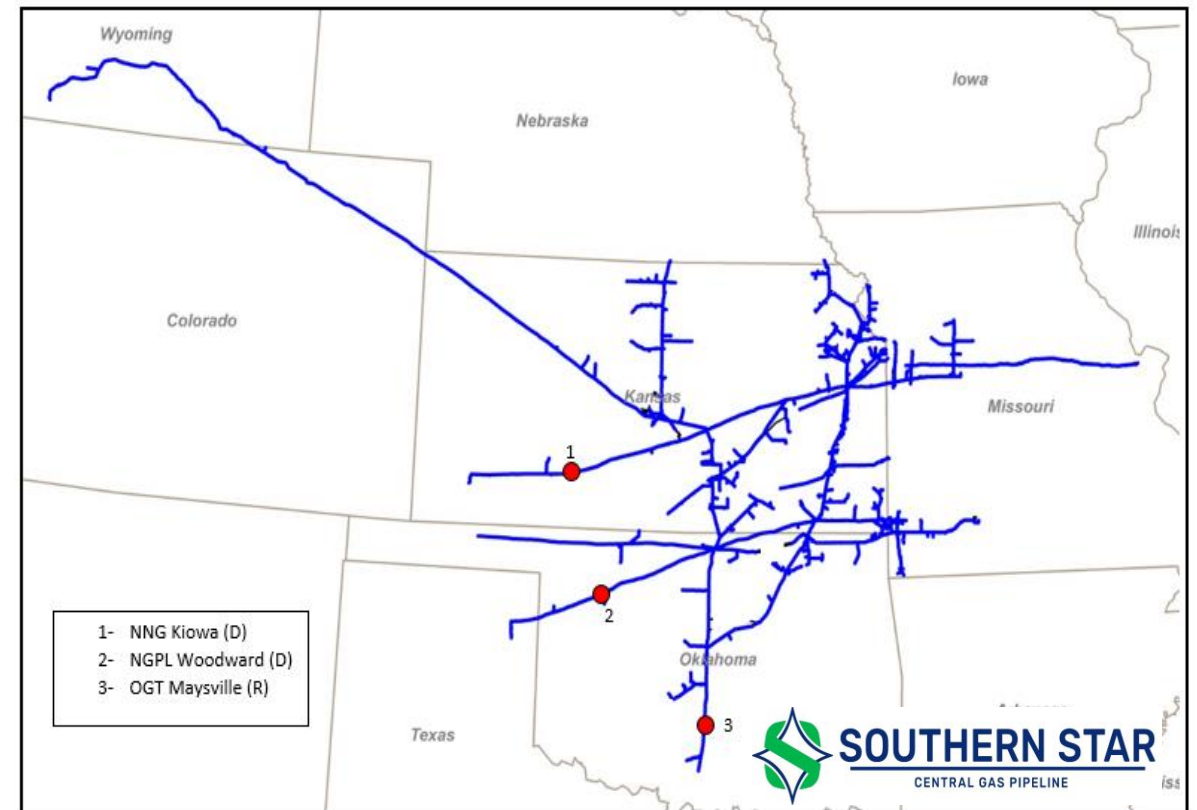


# BUSINESS DEVELOPMENT

## MIDWEST MARKET ACCESS



## NEW PIPELINE INTERCONNECTS



# **CAPACITY PLANNING**

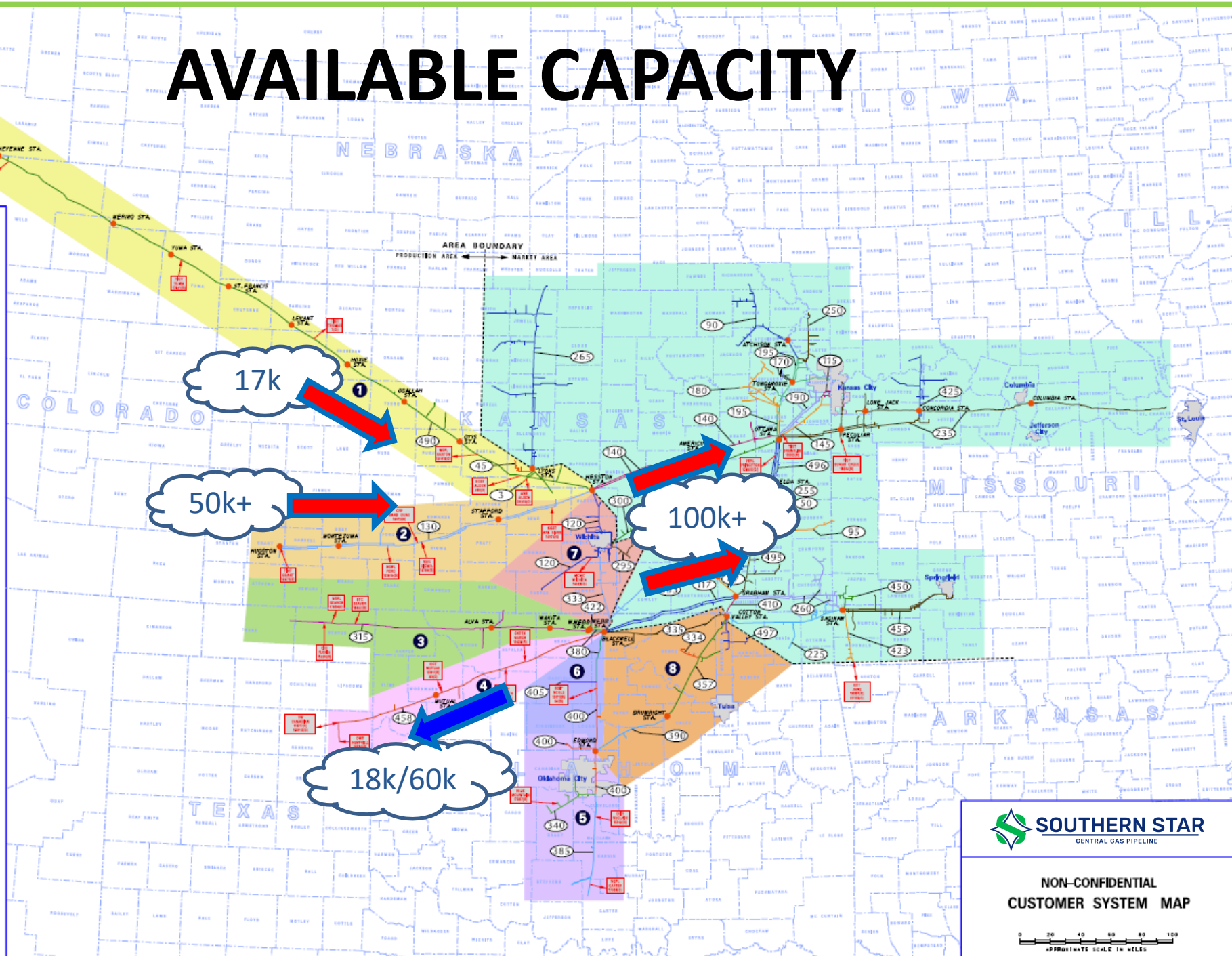
# AVAILABLE CAPACITY

3 ALDEN STORAGE	315 STRAIGHT-BLACKWELL
45 CHASE	333 BLACKWELL-HAYSVILLE
50 COLONY STORAGE	334 TALLANT-SHIDLER
87 ELK CITY STORAGE	335 BLACKWELL-SHIDLER
90 FALLS CITY	340 CEMENT
95 FORT SCOTT	357 DRUMRIGHT-COTTON VALLEY
115 GLAVIN-KANSAS CITY	380 PERRY-BLACKWELL
117 BLACKWELL-GRABHAM	385 MAYSVILLE
120 HESSTON-WICHITA	390 EDMOND-DRUMRIGHT
130 KANSAS-HUGOTON	400 OKLAHOMA CITY
140 HESSTON-OTTAWA	405 RIVINGTON
145 OTTAWA-SOUTH GLAVIN	410 COTTON VALLEY-GRABHAM
170 McLOUTH STORAGE	422 WEBB STORAGE
177 NEDESHA	423 JANE
180 TOPEKA	425 CARROLLTON
185 NORTH WELDA STORAGE	450 SOUTHERN TRUNK RANGELINE
190 OTTAWA-GLAVIN	455 SPRINGFIELD
195 OTTAWA-ST. JOE	458 CANADIAN-BLACKWELL
220 PIQUA STORAGE	490 RAWLINS-HESSTON
225 QUAPAW	493 OTTAWA-NEOSHO RIVER
235 SEDALIA	495 GRABHAM-WELDA
250 ST. JOE	496 WELDA-OTTAWA
255 SOUTH WELDA STORAGE	497 HOGSHOOTER
260 SOUTHERN TRUNK	498 CAMBRIDGE
265 SUPERIOR	
295 WICHITA-DOUGLASS	
300 WICHITA-OTTAWA	

1	RAWLINS-HESSTON POOL (RH)
2	KANSAS HUGOTON POOL (KH)
3	STRAIGHT-BLACKWELL POOL (SB)
4	CANADIAN-BLACKWELL POOL (CB)
5	SOUTH EDMOND POOL (SE)
6	EDMOND-BLACKWELL POOL (BE)
7	KANSAS-OTHER POOL (KS)
8	OKLAHOMA-OTHER POOL (OK)
9	MARKET AREA POOL (MA)

PIPELINE CO.	— GAS DELIVERED
LOCATION	— GAS RECEIVED
DIRECTION	— BIDIRECTIONAL

ANR	ANR PIPELINE COMPANY
BHM	BLUE MOUNTAIN MIDSTREAM
CIS	COLORADO INTERSTATE GAS CO.
CPP	CHEYENNE PLAINS
EOT	ENABLE GAS TRANSMISSION
EDT	ENABLE OKLAHOMA INTRASTATE TRANSMISSION
KGS	ETC FIELD SERVICES
MCMC	KANSAS GAS SERVICE TRANSMISSION (ONE GAS)
NGPL	MID-CONTINENT MARKET CENTER
NNG	NATURAL GAS PIPELINE CO. OF AMERICA
OQT	NORTHERN NATURAL GAS CO.
OKTX	ONEOK GAS TRANSPORTATION
OWT	OKTX PIPELINE COMPANY
PEPL	ONEOK WESTEX TRANSMISSION
PSCD	PANHANDLE EASTERN PIPELINE CO.
QUESTAR	PUBLIC SERVICE CO. OF COLORADO (XCEL)
TIGT	QUESTAR PIPELINE COMPANY
TW	TALLGRASS INTERSTATE GAS TRANSMISSION
	TRANSWESTERN PIPELINE COMPANY



**SOUTHERN STAR**  
CENTRAL GAS PIPELINE

NON-CONFIDENTIAL  
CUSTOMER SYSTEM MAP

0 20 40 60 80 100  
APPROXIMATE SCALE IN MILES

APRIL 15, 2018

# HISTORICAL NOMS

## Historical Average ID3 Scheduled Volume through Constraints (Dth/d)

Constraint		Flow Direction	Active	30 day	60 day	90 day	6 month	1 year
441300	Kansas Hugoton	Receipt	Y	277,530	284,703	264,022	247,872	210,296
442350	Sedalia @ Ottawa	Delivery	Y	106,378	82,246	80,933	74,176	83,081
442351	Little Mo	Delivery	Y	21,329	19,193	19,854	25,889	27,839
443150	Straight Blackwell	Receipt	Y	226,366	225,028	217,108	230,996	236,240

\*Representative example (6/7/2019). There is no guarantee of future nominations.

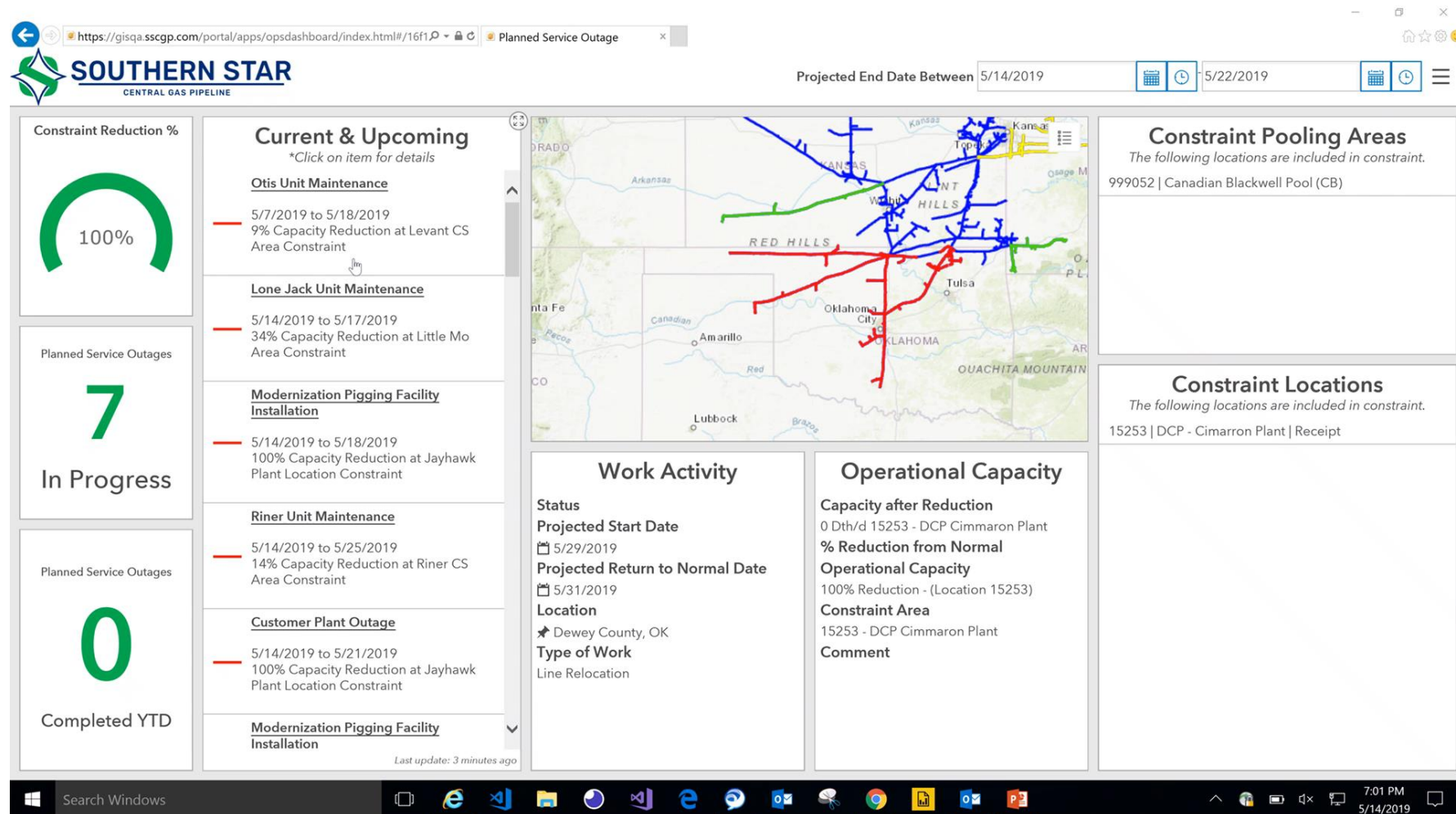
- CSI > Informational Postings > Other Postings > Miscellaneous \*or\* Top Right Corner of PSO

Southern Star 2019 Planned Service Outage		<a href="#">Historical Average ID3 Scheduled Volume</a>
Work Activity	Operational Capacity Information	

# **CSI UPDATES & SCHEDULING**



# IMPLEMENTING NEW TECHNOLOGY



*Improved Functionality*

**MARKETING  
&  
CUSTOMER SERVICE**



# CURRENT OPEN SEASON

- Straight-Blackwell (SB) capacity Open Season is underway
- Service may commence Feb 1, 2020
- Bid Period ends Dec 2, 2019
- For full details please review the open season posting in CSI

## PRODUCTION AREA (STRAIGHT-BLACKWELL)

LOCATION	RECEIPT/ DELIVERY	LOCATION NAME	LINE	MDTQ 2/1/2020
15266	R	CIG FLORIS	315	
17004	D	NGPL BEAVER	315	
16453	R	ETC TEXAS PIPELINE BEAVER	315	
70610	D	GATE	315	
129311	D	ONG HARPER COUNTY	315	
303701	D	CENTRAL PLAIN FEEDYARD	315	
10731	R	CHELIN PLD	315	
297501	D	CARGILL SALT	315	
14513	R	CIMARRON PIPELINE	315	
68518	D	FREEDOM	315	
81	D	GOLDEN GAS STORAGE	315	
15405	R	GOLDEN GAS PLD	315	
16912	R	TARGA - WAYNOKA	315	
17006	R	SEMGAS - ROSE VALLEY	315	
17005	D	SEMGAS - ROSE VALLEY (DELIVERY)	315	
16991	D	ACCESS MIDSTREAM NORTH ALVA	315	
912	D	CAPRON	315	
530	D	KIOWA	315	
44121	D	ALFALFA CITY OK	315	
139	D	SALT PLAINS STORAGE (DELIVERY)	315	
16376	R	SALT PLAINS STORAGE (WITHDRAWAL)	315	
180311	D	WAKITA	315	
16975	R	SUPERIOR - SPRING CREEK	315	
16997	R	DEVON ENERGY MEDFORD STATION	315	
443150		STRAIGHT BLACKWELL	TOTAL	≤ 35,207
999000	D	PMI	909	

# LUG

- **Lost and Unaccounted for Gas**
  - It is the difference of all Input meter dekatherms minus Output meter dekatherms
- **Southern Star 2019 LUG Goal: 0.21%**
- **Year to Date: 0.03%**



**QUESTIONS**

